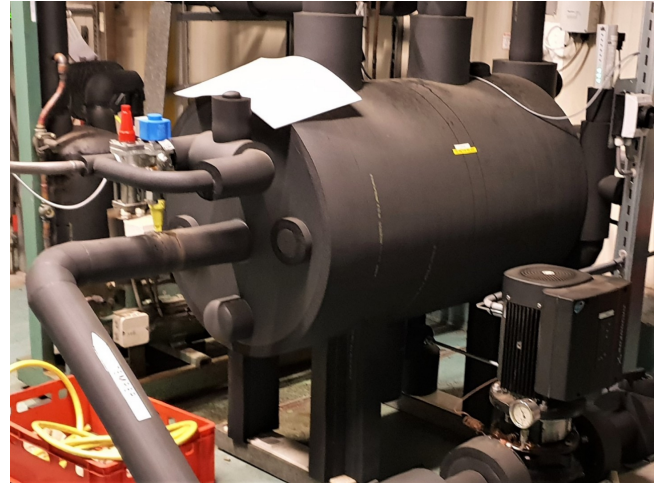


# Vahterus PSHE 5/3HH-332/2/1

## Specifications

|                      |   |
|----------------------|---|
| Marque               | Vahterus                                      |
| Type                 | PSHE 5/3HH-332/2/1                            |
| Product type         | Q plate                                       |
| Refrigerant / Medium | Glycol / Ammonia                              |
| Capacité kW          | 170   |
| Size                 | 1750x860x1850 mm<br>(LxWxH)                   |
| Layers / Cassettes   | 332   |
| Volume               | Plate side 29,8 ltr / shell<br>side 125,5 ltr |
| Remarks              | Y.o.b. 2017 Weight: 612<br>kg                 |
| Remarks              | surface area: 86,32 m <sup>2</sup>            |
| Stock                | 1   |



## Description

### Used Vahterus PSHE 5/3HH-332/2/1

Used Vahterus PSHE 5/3HH-332/2/1 heat exchanger built in 2017. Capacity of 170 kW at operating temperature of glycol -2/-7 °C and ammonia 40/-10 °C. Complete with certificates.

